



ROYAL SUNDANCE® Papers

WRITING, TEXT, COVER, ENVELOPES, & PACKAGING

Strike the perfect balance between character and quality with **ROYAL SUNDANCE®** Papers. This collection offers a timeless spectrum of whites and neutral tones, rich and enduring colors, and a variety of finishes that are temptingly tactile.

- Go-to neutrals and colors that stand the test of time
- 5 Finishes: Linen, Smooth, Vellum, Felt, and Fiber
- Digital items in four finishes
- Weights ranging from 24 lb. Writing to 130 lb. Double Thick Cover
- Envelopes available in 33 styles for all Writing and Text colors



ECLIPSE BLACK™ ⊕



EMERALD GREEN ⊕



KRAFT ⊕



BURGUNDY ⊕



MIDNIGHT BLUE ⊕



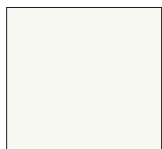
ICE BLUE ⊕



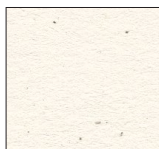
GRAY FIBER ⊕



GRAY ⊕



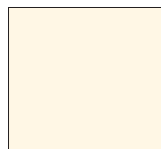
WHITE ⊕



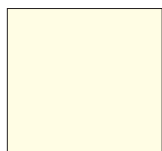
BIRCH ⊕



COTTONWOOD ⊕



NATURAL ⊕



NATURAL WHITE ⊕



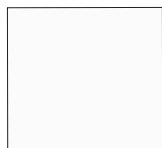
CREAM ⊕



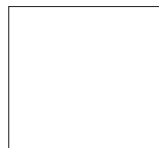
IVORY ⊕



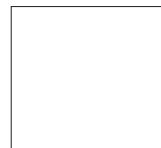
WARM WHITE ⊕



100 PC WHITE ⊕



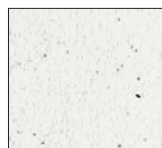
ULTRA WHITE ⊕



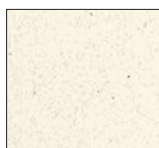
BRIGHT WHITE ⊕



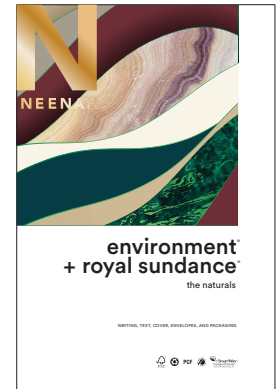
BRILLIANT WHITE ⊕



WHITE FIBER ⊕



NATURAL FIBER ⊕



ROYAL SUNDANCE® Papers are part of **THE NATURALS** swatchbook.

NEENAH GREEN



FSC® CERTIFIED

All **ROYAL SUNDANCE®** Papers meet the mark of responsible forestry.



SmartWay™
Transport Partner
Getting There With Cleaner Air

SMARTWAY CERTIFIED

U.S. EPA SmartWay Transport Partnership ensures environmentally responsible delivery of our products.



POST CONSUMER FIBER

Papers with a recycled symbol contain a minimum of 30% post consumer fiber.



GREEN SEAL® CERTIFIED

All recycled colors in **ROYAL SUNDANCE®** Papers are made with a minimum of 30% post consumer fiber and meet federal procurement guidelines.



PCF PROCESSED CHLORINE FREE

Our 100% post consumer recycled papers are manufactured with fibers processed using chlorine-free practices.



NEENAH

ROYAL SUNDANCE® Papers

WRITING, TEXT, COVER, ENVELOPES, & PACKAGING



ROYAL SUNDANCE® Papers

All ROYAL SUNDANCE® Papers are

Bold numbers indicate grain direction

| | Writing and Text Papers Laser & Ink Jet Guaranteed | | | | | Writing and Text Papers Laser & Ink Jet Guaranteed | | | | | | | | | | |
|---|--|-------------------|----------|-------------------|-------|--|---------------|-------|------|-----------|--------|----------|----------------|--------------|--------------|---------------|
| | Inches | Millimeters | M Weight | Sheets per Carton | Grain | Brilliant White* | ColonyShield® | Cream | Gray | Ice Blue® | Kraft® | Natural® | Natural White® | Ultra White® | Vivid White® | 100 PC White® |
| FELT FINISH | | | | | | | | | | | | | | | | |
| 70 Text (104 gsm) 6.3pt | 23 x 35 | 584 x 889 | 119 | 1000 | | | | | | | | | | | | |
| | 25 x 38 | 635 x 965 | 140 | 1000 | | | | | | | | | | | | |
| 80 Text (118 gsm) 7pt | 25 x 38 | 635 x 965 | 140 | 750 | | | | | | | | | | | | |
| 65 Cover (176 gsm) 10.3pt | 26 x 40 | 660 x 1016 | 260 | 500 | | | | | | | | | | | | |
| 80 Cover (216 gsm) 13pt | 23 x 35 | 584 x 889 | 248 | 500 | | | | | | | | | | | | |
| | 26 x 40 | 660 x 1016 | 320 | 300 | | | | | | | | | | | | |
| 100 Cover (270 gsm) 16.4pt | 26 x 40 | 660 x 1016 | 400 | 250 | | | | | | | | | | | | |
| 110 Cover (297 gsm) 17.7pt | 26 x 40 | 660 x 1016 | 440 | 300 | | | | | | | | | | | | |
| | 26 x 40 | 660 x 1016 | 440 | 200 | | | | | | | | | | | | |
| FELT DIGITAL [d] | | | | | | | | | | | | | | | | |
| 80 Text (118 gsm) 7pt | 12 x 18 | 305 x 457 | 36.36 | 1000 | | | | | | | | | | | | |
| 80 Cover (216 gsm) 13pt | 18 x 12 | 457 x 305 | 66.46 | 500 | | | | | | | | | | | | |
| | 19 x 13 | 483 x 330 | 76 | 500 | | | | | | | | | | | | |
| 100 Cover (270 gsm) 16.4pt | 18 x 12 | 457 x 305 | 83.06 | 500 | | | | | | | | | | | | |
| | 19 x 13 | 483 x 330 | 95 | 500 | | | | | | | | | | | | |
| | 20.75 x 29.5 | 527 x 749 | 235 | 250 | | | | | | | | | | | | |
| FIBER FINISH | | | | | | | | | | | | | | | | |
| 24 Writing (90 gsm) 4.6pt Unwatermarked | 8.5 x 11 | 216 x 279 | 12 | 5000 | | | | | | | | | | | | |
| | 35 x 23 | 889 x 584 | 103 | 1000 | | | | | | | | | | | | |
| 70 Text (104 gsm) 5.3pt | 8.5 x 11 | 216 x 279 | 13.76 | 3000 | | | | | | | | | | | | |
| | 11 x 17 | 279 x 432 | 27.54 | 1500 | | | | | | | | | | | | |
| | 23 x 35 | 584 x 889 | 119 | 1000 | | | | | | | | | | | | |
| | 25 x 38 | 635 x 965 | 140 | 1000 | | | | | | | | | | | | |
| 80 Cover (216 gsm) 10.8pt | 8.5 x 11 | 216 x 279 | 28.76 | 2000 | | | | | | | | | | | | |
| | 26 x 40 | 660 x 1016 | 320 | 300 | | | | | | | | | | | | |
| | 35 x 23 | 889 x 584 | 248 | 500 | | | | | | | | | | | | |
| FIBER DIGITAL [d] | | | | | | | | | | | | | | | | |
| 80 Cover (216 gsm) 10.8pt | 18 x 12 | 457 x 305 | 66.46 | 500 | | | | | | | | | | | | |
| | 19 x 13 | 483 x 330 | 76 | 500 | | | | | | | | | | | | |
| SMOOTH FINISH | | | | | | | | | | | | | | | | |
| 24 Writing (90 gsm) 4.4pt Watermarked | 8.5 x 11 | 216 x 279 | 12 | 5000 | | | | | | | | | | | | |
| | 35 x 23 | 889 x 584 | 103 | 1000 | | | | | | | | | | | | |
| 70 Text (104 gsm) 5pt | 25 x 38 | 635 x 965 | 140 | 500 | | | | | | | | | | | | |
| 80 Text (118 gsm) 5.8pt | 23 x 35 | 584 x 889 | 136 | 750 | | | | | | | | | | | | |
| | 25 x 38 | 635 x 965 | 160 | 500 | | | | | | | | | | | | |
| | 25 x 38 | 635 x 965 | 160 | 750 | | | | | | | | | | | | |
| 100 Text (148 gsm) 7.3pt | 23 x 35 | 584 x 889 | 169 | 500 | | | | | | | | | | | | |
| | 25 x 38 | 635 x 965 | 200 | 500 | | | | | | | | | | | | |
| 65 Cover (176 gsm) 8.5pt | 26 x 40 | 660 x 1016 | 260 | 300 | | | | | | | | | | | | |
| 80 Cover (216 gsm) 10.5pt | 26 x 40 | 660 x 1016 | 320 | 300 | | | | | | | | | | | | |
| 100 Cover (270 gsm) 12.8pt | 26 x 40 | 660 x 1016 | 400 | 250 | | | | | | | | | | | | |
| 110 Cover (297 gsm) 14.3pt | 26 x 40 | 660 x 1016 | 440 | 300 | | | | | | | | | | | | |
| 130 Double Thick Cover (352 gsm) 16pt | 26 x 40 | 660 x 1016 | 520 | 200 | | | | | | | | | | | | |
| VELLUM FINISH | | | | | | | | | | | | | | | | |
| 70 Text (104 gsm) 5.8pt | 23 x 35 | 584 x 889 | 119 | 1000 | | | | | | | | | | | | |
| | 25 x 38 | 635 x 965 | 140 | 500 | | | | | | | | | | | | |
| | 23 x 35 | 584 x 889 | 136 | 750 | | | | | | | | | | | | |
| 80 Text (118 gsm) 6.4pt | 25 x 38 | 635 x 965 | 160 | 500 | | | | | | | | | | | | |
| | 25 x 38 | 635 x 965 | 160 | 750 | | | | | | | | | | | | |
| 80 Cover (216 gsm) 11.8pt | 26 x 40 | 660 x 1016 | 320 | 300 | | | | | | | | | | | | |
| 100 Cover (270 gsm) 15pt | 26 x 40 | 660 x 1016 | 400 | 200 | | | | | | | | | | | | |
| 110 Cover (297 gsm) 16pt | 26 x 40 | 660 x 1016 | 440 | 200 | | | | | | | | | | | | |
| VELLUM DIGITAL [d] | | | | | | | | | | | | | | | | |
| 80 Text (118 gsm) 6.4pt | 13 x 19 | 330 x 483 | 41.6 | 1000 | | | | | | | | | | | | |
| | 29.5 x 20.75 | 749 x 527 | 103 | 500 | | | | | | | | | | | | |
| 80 Cover (216 gsm) 11.8pt | 19 x 13 | 483 x 330 | 76 | 500 | | | | | | | | | | | | |
| | 20.75 x 29.5 | 527 x 749 | 188 | 250 | | | | | | | | | | | | |

* Brilliant White is not Green Seal™ certified
 ▲ The linen pattern in the finished envelopes for #10's will be diagonal and will be straight grain on A sizes



The mark of responsible forestry

Please look for FSC® certified products

www.neenahpaper.com

©Registered Trademarks and ™ Trademarks of Mativ, Inc. © 2024 MI. All rights reserved. Printed in the U.S.A.
 The printed color "chips" may not be a completely accurate representation of the paper color. View as a general representation only.